

\*Kala. v#1/1988 watch it up?

Ecology Center Copy

WILD

ROCKIES

Wild Rockies Review  
1988  
Missoula, MT 59807

# Earth First!

P.O.Box 6151

Bozeman, MT 59715

## "Agitate, Educate, Organize!"

### FROM THE EDITOR :

Welcome to the first edition of the Wild Rockies Earth First! Newsletter! This initial issue will serve to inform interested parties that this newsletter is now in publication, and will provide news of recent Earth First! activities and related stories in the Rocky Mountains of Montana, Idaho and Wyoming.

As the editor, I encourage you, the reader and environmental activist, to send articles, poems, artwork and any items relating to Earth First! to this newsletter for potential publication. The newsletter will be published on a sporadic basis ( at least to begin with ) as time and funding allow, and the format will develop as articles are submitted and issues develop.

The main function of this publication is to provide a forum for the Earth First! perspective in the Wild Rockies, and to spread the Earth First! philosophy. Issues which will receive priority in this newsletter include Earth First! actions/demonstrations, efforts to preserve and protect wildlife and wilderness and threats to the same, Federal land issues (including citizen appeals of Forest Service decisions ) and environmental philosophy.

I need your input! What should this newsletter include? What are the Feds planning for your backyard? Who should receive this paper? This is your newsletter and will serve to

connect you with other Earth-oriented folk in the Wild Rockies. Let me hear from you!  
-Randall Restless

### MONTANA EFi APPEALS GALLATIN FOREST PLAN

by  
URSA MINOR

The Gallatin National Forest in Southwest Montana is one of the largest and wildest in the Lower 48. The Gallatin comprises 1,735,412 acres of the Greater Yellowstone Ecosystem (GYE), and includes the Lee Metcalf and Absaroka-Beartooth Wilderness areas, along with the Crazy, Bridger, and Gallatin mountain ranges. It holds crucial habitat for elk, moose, deer, mountain goats, bighorn sheep, grizzly and black bears, wolverines, goshawk, osprey, bald and golden eagles.

Montana Earth First! has appealed the final Forest Plan and Environmental Impact Statement (EIS), released October, 1987. National Forest economic critic Randall O'Toole has called the Gallatin "one of the worst " Forest Plans he has seen. The EFi appeal states " Montana Earth First! is a Deep Ecology organization committed to preserving healthy ecosystems and protecting wildlands. Montana EFi members regularly engage in diverse recreational activities on the Gallatin...and are directly and significantly affected by the Regional Forester's decision."

**cont. on pg. 4**

## SOURDOUGH TIMBER SALE CANCELLED!

Sourdough Creek issues from the Gallatin Range south of Bozeman, Montana and provides the water supply for the city of Bozeman. Sourdough Canyon, though it has been heavily impacted by logging in the past, is now closed to motor vehicles and is very popular with the local residents for skiing, hiking, bicycling, horseback riding and hunting. It is also important habitat for wildlife like elk and moose. In spite of the importance of Sourdough, the Gallatin Forest (GNF) planned to clearcut 3.5 million board feet of timber in the drainage during the next few years.

Conservationists snoozed through the appeal period last spring, but the Madison-Gallatin Alliance did file an appeal at a later date. In January of this year local activists caught wind of the sale and began a petition drive in Bozeman to oppose it. The GNF learned of the opposition to the sale and scheduled a meeting with "local conservation leaders". EFL announced the meeting on the local college radio station, inviting all interested persons to attend. Eighty people showed up for the meeting, and they were angry! Only three of the 80 were openly in favor of the sale. The first question set the tone for the three hour meeting: "How can we stop this sale?"

The sale was opposed not only by environmentalists, but also by local businessmen, hunters, bicyclists, and people who simply love the area.

A week later, on the eve of the EFL Northern Rockies Rendezvous, the GNF announced they were suspending the sale, and it was later cancelled completely. This decision set two important precedents: it was one of the first decisions made under the regime of new GNF Supervisor Bob Gibson, and it was one of very few timber sales stopped without an appeal being filed in the allotted time. This case shows that the GNF, and the Forest Service general, is being closely watched and are becoming more concerned about their public image, as indeed they should be!

## IDAHO WILDERNESS SELL-OUT

Idaho is rightly called the Wilderness State, as it contains over 13 million acres of roadless Forest Service land. Within Idaho are some of the largest and wildest pieces of country south of Alaska. 9.3 million acres of this wilderness is currently unprotected, and 88% of these unprotected lands are in serious danger!

Senator James McClure and Governor Cecil Andrus recently struck a deal which resulted in McClure introducing an Idaho Wilderness Bill which would designate only 1.3 of the 9.3 million acres as Wilderness. The worst aspect of this bill is the dangerous language included; language which would result in the wholesale destruction of the Idaho Panhandle Forest by logging and which would establish timber as the highest use of the forest, superceding recreation, water quality, and wildlife in forest management.

The Bill mandates a yearly harvest of 283.5 MBF (million board feet) from 2.5 million acres, including 40.5 from the Bonner's Ferry District alone. This is over 50MBF more than the Panhandle has been able to sell in recent years. Timber harvest would override the Endangered Species Act, the Clean Water Act, and the National Forest Management Act, setting an extremely dangerous precedent for Forest management nationwide and effectively cancelling citizen participation via the appeals process. The Bill also twists the definition of road to mean "...any parallel track together with an area measuring 50 feet to either side from the center line of such track which was used prior to the enactment of this act...and which may be travelled by four wheel drive vehicles..." This would blast hundred-foot wide corridors through the wilderness wherever any joker can force his way through in a jeep, permanently excluding these corridors from Wilderness designation. This defies the NFMA definition of road, which requires periodic maintenance by machines.

McClure's Bill is now before the Senate Subcommittee on Energy and Natural Resources. EFL opposes this bill as a perversion of the Wilderness Act and will continue to support

Wilderness designation for all Idaho roadless public lands. Please write your Senators and Representatives. Urge them to oppose this horrendous Bill!

### BULLETINS

#### -- HOUSE BILLS NEED OUR SUPPORT

\*Rep. Wayne Owens (D-UT) has introduced HR 3378 which would require completion of an Environmental Impact Statement (EIS) on reintroduction of Gray Wolves to Yellowstone Park within three years of the bill's passage. This bill would override the Wyoming Congressional Delegation's blockade of wolf reintroduction.

\*Rep. Pat Williams (D-MT) has co-sponsored HR 39, which would designate the 1.5 million acre Coastal Plain of the Arctic National Wildlife Refuge as Wilderness. This would prevent the imminent despoilation of the Coastal Plain by oil and gas development. Mr. William has stated " This treasure is simply too valuable to be risked on speculative oil and gas exploration..."

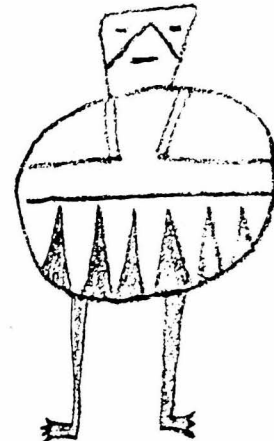
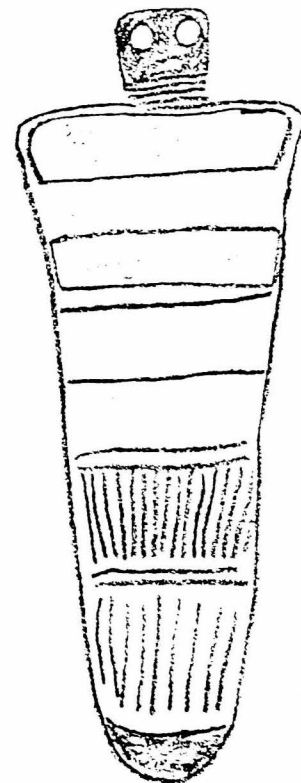
Write your congressmen today, asking that they support these crucial bills.

--National Day of Infuriation, Disgust, and Protest against the U.S. Forest Service!

On April 21, John Muir's birthday, there will be a nationwide outcry against the Federal Agency that Howie Wolke has called "the bastard sons of Gifford Pinchot". The destructive, commodity-oriented management of our public lands must end! Join the protest on your favorite forest! For more info, contact this paper, or: Mike Roselle, Box 210, Canyon, Ca. 94516

#### --Hearings on Montana Wilderness Bill

Senate subcommittee hearings have been scheduled by Sen. John Melcher for March 21 and 22, 9:30-noon. For anyone interested in testifying, it's still open- call Mr. Tom Williams at (202) 224-7145. Steve Kelly will be there representing the maximum wilderness view, as will Mike Bader.



#### EF! OPPOSES WINTER EXPANSION IN YELLOWSTONE

Earth First! paid a visit to Mammoth in Yellowstone Park in early February to deliver a message to a visiting Senate Subcommittee. The politicians were there to discuss the potential expansion of winter tourist facilities in Yellowstone, at a price of \$13 million. EF!'s message, portrayed through demonstration and street theatre in the icy winds outside the hotel: NO MORE DEVELOPMENT! SNOWMOBILES OUT OF YELLOWSTONE!

## cont. from pg. 1

"Montana EFl will be directly affected by the implementation of the Plan and EIS. The timber harvesting, road building, oil and gas, mining, and grazing activities contemplated by the Plan will diminish scenic values, degrade critical wildlife habitat and water quality in the Forest's renowned fisheries, and lower the quality of the recreational experiences of users of the Forest. Furthermore, future management options will be impaired or lost if this plan is fully implemented."

Here are some examples of this Plan's failure to provide for maintenance of biological integrity:

### WILDERNESS

The Gallatin currently has 715,674 acres of designated Wilderness and an additional 488,400 remain roadless. The Plan recommends a paltry 21,941 acres for Wilderness. Their only recommendations are for Lionhead and Republic Mountain, and these areas have been shrunk by 1570 acres to cater to snow<sup>mo</sup>billers. The Plan fails to recommend Wilderness for Cowboy's Heaven (14,000 a.) and Earthquake (19,800a.) even though these areas are included in the Wilderness Bills of Senator Max Baucus and Rep. Pat Williams. Also left out was the 24,000 acre Hyalite Peaks roadless area, which is in Williams' bill. The Forest plans to develop 25,700 acres of roadless lands in the next 20 years. This is about 3800 acres more than is recommended for Wilderness!

### ROADS

There are currently 807 miles of inventoried road on the Gallatin. The Forest plans to build 710 miles of new road in the next 30 years. In addition, hundreds of miles of road would be rebuilt, and 170 miles of new access road would reach the Forest boundary. 70% of new Forest roads would be closed, leaving about 200 miles of new road open to motorized recreation. The Plan fails to take into account the over 1,000 miles of uninventoried roads in the Forest.

### GRIZZLIES

The Gallatin has about 817,400 acres of occupied Grizzly Bear habitat, providing 13% of the habitat in the GYE. The Plan would purportedly manage 100% of occupied habitat in favor of the Bear, yet an average of 377 acres of occupied habitat would be logged every year, and 14,700 AUM's of grazing would occur yearly in Griz habitat. The Gallatin's record on Grizzly preservation is poor: from 1981 to 1984, 25% of the Grizzly mortality in the GYE occurred in the Gallatin!

### WOLVES

The Gallatin is taking no part in attempts to reintroduce the extirpated Gray Wolf, though the Endangered Species Act mandates that the Forest assure the recovery of these Endangered animals. Some of the best potential Wolf habitat is found on the Gallatin.

### OIL&GAS

Almost all non-Wilderness lands on the Forest would be open to leasing, despite poor potential for success in most areas. Existing leases would all be honored, leaving the Crazies, Gallatins, North Absarokas and especially the Bridgers ( where seismic exploration is underway) open to drilling. (See Bulletins for update.)

### PRIVATE HOLDINGS

About 25% of the land within the Forest boundaries is privately owned. Burlington Northern-Plum Creek own 137,000 acres, acquired through 19th century railroad grants, and plans to log all these lands in the next 10 years. Much of their land is "checkerboard" sections within roadless areas of the Gallatins and Crazies. The Forest has made half-hearted attempts to acquire some of the lands in the Gallatin Range, but the Plan offers no details on the status of these efforts.

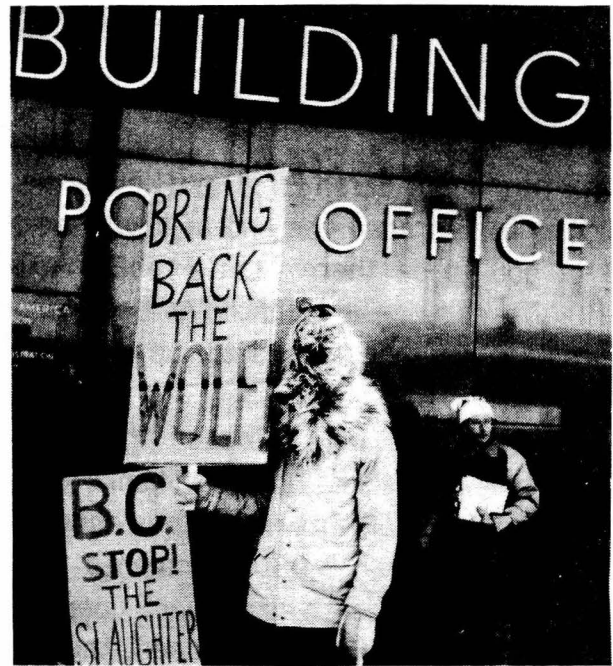
### TIMBER

Nearly 1/3 of the non-Wilderness lands on the Gallatin will be subject to timber "management" in this Plan. Timber sales will



continue to be below-cost. Timber management will be designed to "convert more of the stand into young age classes". Yet the Plan claims that "Species such as moose and goshawk, which depend on old growth forest, would not be adversely affected". This defies logic.

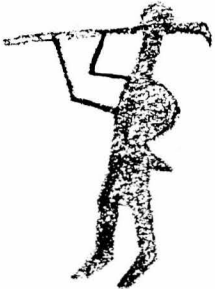
The Gallatin Forest Plan spells potential disaster for all the wild creatures which depend on unspoiled wilderness for their survival. It threatens the already shaky integrity of the GYE, and if implemented, means further degradation of one of the nation's finest Forests. Montana EF! is dedicated to promoting ecologically sound management for all Montana and Yellowstone Forests. Thus the Gallatin Forest Plan should be rejected, and a new draft prepared.



#### B.C. WOLF KILL CANCELLED!

The British Columbia Provincial Government's heinous plans to kill hundreds of wolves in northern B.C. have been indefinitely put on hold. EF! and Friends of the Wolf deserve much of the credit due to the pressure put on B.C. via demonstrations, sit-ins, and media blitz across Canada, the U.S. and Europe. Good Work! Hats off to the Missoula Friends of the Wolf who played a crucial role during 2 weeks of demonstrations in B.C. More next issue.

## BULLETINS ctd.



#### --Oil and Gas Leases Void on Flathead and Gallatin!

A recent ruling on the Conner v. Burford decision in the 9th Circuit Court of Appeals invalidated all oil and gas leases on the Flathead and Gallatin Nat. Forests in Montana. Any oil and gas leasing on these forests must precede by a full EIS assessing the cumulative impacts of all leasing on the forest.

#### --AMERICANS FOR WILDERNESS MONTANA PROPOSAL

The Americans for Wilderness Coalition has prepared a flyer detailing their proposal to designate all of Montana's roadless public lands as Wilderness. Write this newsletter for copies of the flyer.

#### --C.U.T. EIS OUT

The draft E.I.S. on the Church Universal and Triumphant development in Paradise Valley is out. For a copy write: State of Montana, Dept. of Health and Environmental Services, Cogswell Building, Capitol Station, Helena, Mt. 59620. The public comment period has been extended to April 21. There will be a public meeting on March 21st at 7:00 P.M. in the High School in Gardiner, Mt. Please come early!



## FISHING BRIDGE

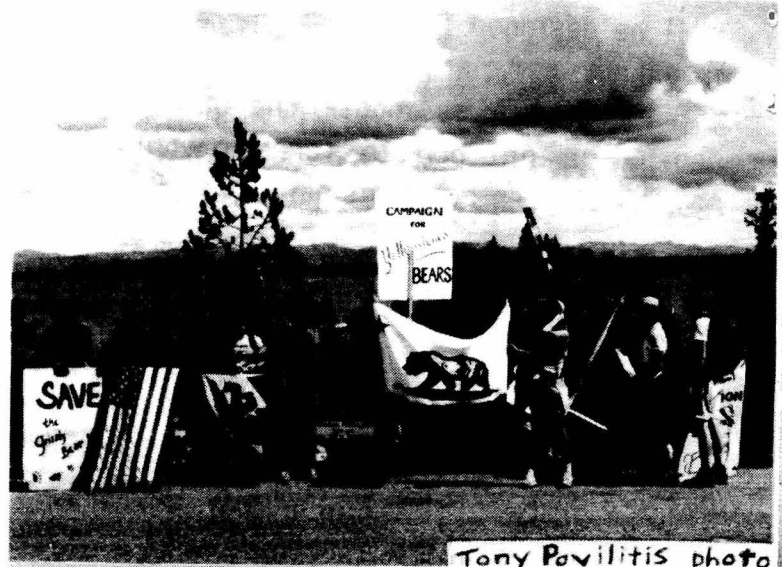
Yes, it looks like this infamous eyesore will be open to hordes of R.V.'s (Road Vermin) once again this year. Earth First! will make a stand on opening day (around the end of May) and we need all of you to be there. Let's really raise some hell! This place should have been shut down years ago and Griz should be roaming there unmolested.

Last fall the NPS released the draft EIS on the closure of Fishing Bridge. Thanks to everyone who commented on this worthless document. The NPS received over 3,000 comments on the EIS during the 2 month comment period. The majority of comments opposed the preferred alternative A, (which recommends leaving the R.V. Park open and replacing the campground with a new one near Bridge Bay ) and favored alternative E, which calls for complete removal of facilities at Fishing Bridge without replacement. Most of the substantive comments also favored alternative E, while those favoring the Preferred Alternative were mostly short and insubstantial.

So what's next? The NPS plans to release the Final EIS late this spring, though considering their prior record of promptness on this issue, I'd be surprised to see the Final before this fall. Thus the Fishing Bridge area is likely to be open once again, while the Final Decision is in limbo. If the NPS sticks with alternative A in the Final, there will be hell to pay. Unless E is recommended, EFi will organize a massive drive to solicit comments on the Final EIS, and that failing, will appeal the final decision in court. Fishing Bridge must go! Then we can start on Grant Village...

" Last night I was deep in an uneasy sleep and I dreamed Crazy Horse had returned. Ridin' 'cross the dampgrounds of KOA Kampgrounds 'till the last Winnebago was burned "

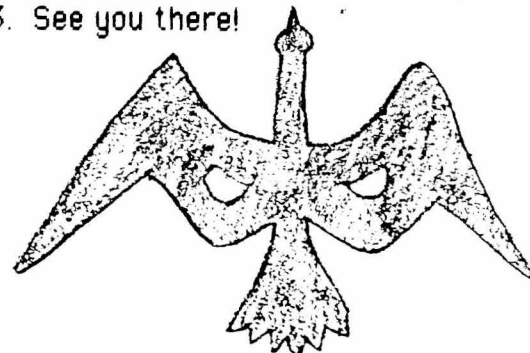
Greg Keeler, "There ain't no such thing as a Montana Cowboy"



## NATIONAL EFi RENDEZVOUS IN WASHINGTON STATE

The 1988 Round River Rendezvous will be held in eastern Washington June 29-July 4. I'd like to see a huge Wild Rockies camp this year! Last year's RRR on the North Rim of the Grand Canyon was attended by only 6 people from the Northern Rockies. This time the RRR is much closer. C'mon folks! Montana has a reputation to uphold, and we need help from Idaho and Wyoming! The RRR is Turtle Island's greatest celebration of Mother Earth. Start thinking now about how you will get there. Volunteer through this newsletter to coordinate carpools for your area. Prod your compadres to attend.

To help with the monumental task of organizing the RRR, contact the Rendezvous Committee at: POB 5871, Tuscon, Arizona 85703, Attn. 88 RRR Committee. The Committee needs your \$\$ too, as many of the costs of the RRR will be incurred well before the event. Tax-deductible contributions can be sent to the Earth First! Foundation, POB 50681, Tuscon, AZ 85703. See you there!



## WILD ROCKIES EFI RENDEZVOUS HAPPENS

### SOME REFLECTIONS BY ELEANOR:

My first EFi rendezvous so inspired me that I have joined forces with Phil Knight here in Bozeman to help produce this first Wild Rockies newsletter. The process of growing awareness of our Earth and her inhabitants has been a slow awakening with intermittent bursts of illumination filled with pain and joy simultaneously. The Boulder rendezvous was such a burst of illumination for me. I enjoyed the variety of viewpoints from all over the high Wild Rockies. One man even came from southern Utah. The overall affirmation for me was one of the interconnectedness of everything on Earth has to contribute to this marvelous wonder we call 'Life'. 'Affirm all life' sums up the EFi purpose for me.

### FROM PHIL:

EFi gathered 100 strong at Boulder Hot Springs, near Boulder, Montana, on January 29-31 for a wild weekend of strategizing, singing, soaking and suds. Thanks to all who attended and especially to the organizers! Thanks also to the generous staff of BHS, who provided us with very reasonable, appropriate facilities.

The workshops and entertainment were varied and enlightening. Discussions touched on the history of Montana EFi, the future of environmental organizations in the Wild Rockies, Yellowstone Gray Wolf reintroduction and the B.C. Wolf kill, the upcoming National Day of Protest (disgust?dismay?) against the Forest Service, Grizzlies and Fishing Bridge, Bioregionalism and the banishment of political boundaries, and other pertinent topics with, of course, water aerobics.

Somehow the workshops got squeezed by the meals and entertainment, but we know what's most important. Friday we were treated to a showing of John Seed's Australian EFi movie and a video on Nicaragua by EPOCA (Environmental Projection on Central America). Saturday night was a classic Montana EFi show with Walkin' Jim

and Greg Keeler pouring their hearts out through their guitars. Also featured were Mike Bader's slide show on the Rocky Mountain Front and a slide show on the Artic National Refuge by Steve Gehman. Another highlight of the evening was the hilarious and original "Wolf Rap" by the Missoula Friends of the Wolf.

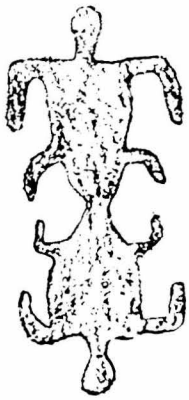
The workshops on Sunday were less than productive, as people were restless and began leaving early. The Rendezvous seemed to end on a rather low note, with everyone just dispersing. I'd have liked to end it with a circle and a howl, so all would leave energized. However, the most important part of a Rendezvous is to bring everyone together, and much strategizing and networking occurs in personal conversation.

While the Rendezvous spirit is still in the air, I'd like to make a plug for EFi. Those of you now involved, I urge you to make

the commitment to stay involved. Who else will speak for the Earth? It must be us. Those of you new to EFi (there were a lot of newcomers at the Rendezvous), we need you! We need your ideas, your energies, your enthusiasm. The Earth needs you! To all of you battling for that which is Wild: When the odds seem insurmountable, when your fuse burns short, when the despoilers seem ready to burst thru your very door, go to the hills, to the river's source, follow the path of the moose, perch on the loftiest crag you can find and howl your defiance to the wind! Make contact with the wilderness we are Fighting For; it will give you the strength of the Grizzly, the patience of the Badger, the vision of the goshawk and the perserverence of the migrating goose. The Wild is our home! Go to it!

" The Earth it holds the key  
To all that shall be free,  
It's in the peace of the desert  
And the wisdom of the trees,  
It's in the grace of a swan's wing  
And the Grizzly when she's riled,  
It's in all the love I bear it  
Let it stay Forever Wild"

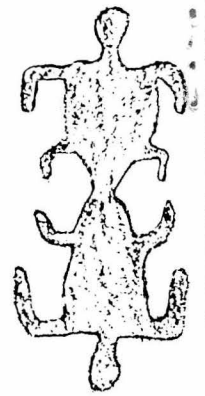
-Walkin' Jim



### NAUSEATING PLEA FOR CASH:

There is currently no subscription price for this newsletter. It is mailed free to all interested persons. However, it takes \$\$, of which we have few, to publish and mail this rag. Contributions constitute all of our available money. So send your greasy bills please! TO: Montana Earth First!

P.O. Box 6151  
Bozeman, MT 59715



Have we left you out? Send info on your organization if you'd like to be listed!

Wild Rockies EFi supports the efforts of these hard-working, grassroots, primarily volunteer groups fighting for Wilderness and Wildlife in the Rocky Mountains:

\*Coalition for Canyon Preservation  
POB 422  
Hungry Horse, MT 59919

\*Great Bear Foundation  
P.O. Box 2699  
Missoula, MT. 59806

\* Wyoming Wants Wolves  
655 N. Cedar  
Laramie, WY. 82070

\*Swan View Coalition Inc.  
Box 1901  
Kalispell, MT 59901

\*Badger Chapter  
P.O. Box 8374  
Missoula, MT 59807

\*EVST Advocates  
Environmental Studies,  
UM, Missoula, MT59812

\*Campaign for Yellowstone's Bears  
POB 416  
Boulder, CO 80306

\*Yellowstone Park Preservation  
Council Box 618  
Yellowstone Nat. Park, WY.81290



Earth First!  
P.O. Box 6151  
Bozeman, MT 59715



Bill Haskins  
834 Sherwood St.  
Missoula, MT 59801